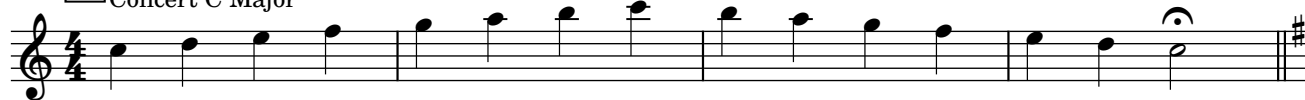
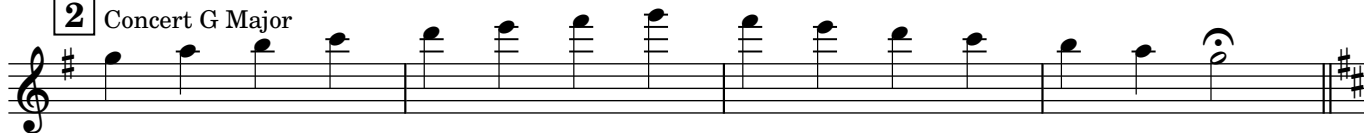


Da Capo Warm-Ups - Major Scales

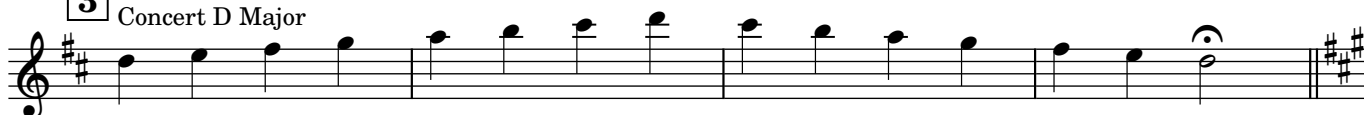
1 Concert C Major



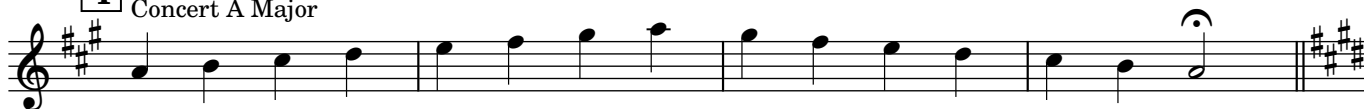
2 Concert G Major



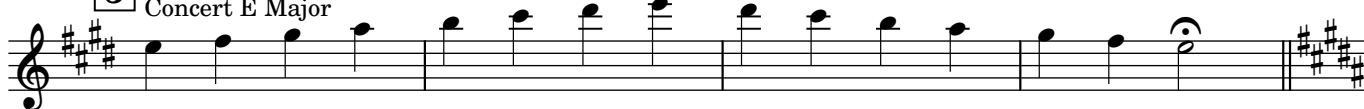
3 Concert D Major



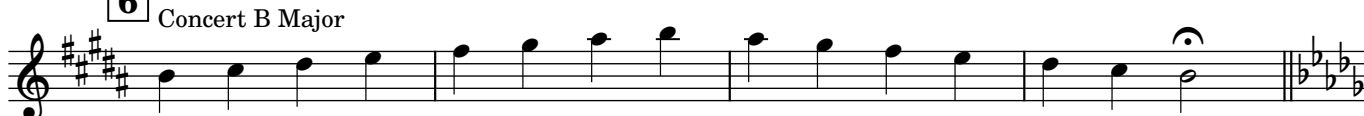
4 Concert A Major



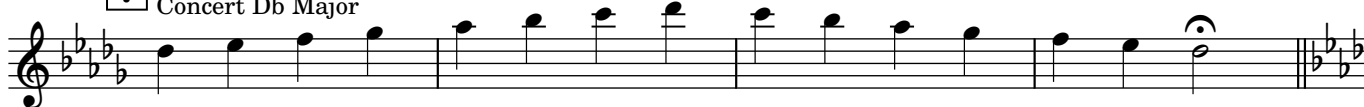
5 Concert E Major



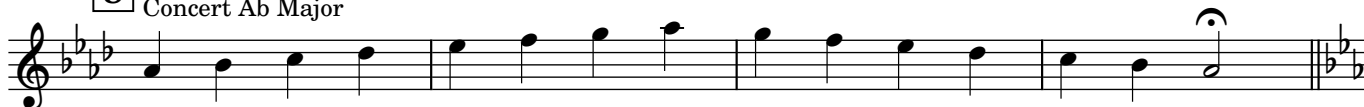
6 Concert B Major



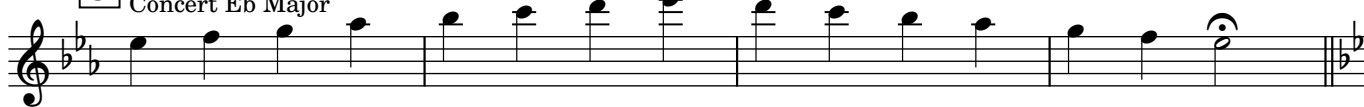
7 Concert Db Major



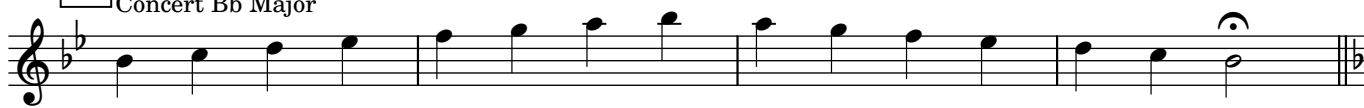
8 Concert Ab Major



9 Concert Eb Major



10 Concert Bb Major



11 Concert F Major



Piccolo Da Capo Warm-Ups - Dynamic Control

C Cherng

A - Long Notes

mf *mp* *p* *p* < *mf* *mf* *f* *ff* > *p* < *ff*

B - Swells

p *f*

C - Forte-piano

p *fp*

D - Mixed Dynamics

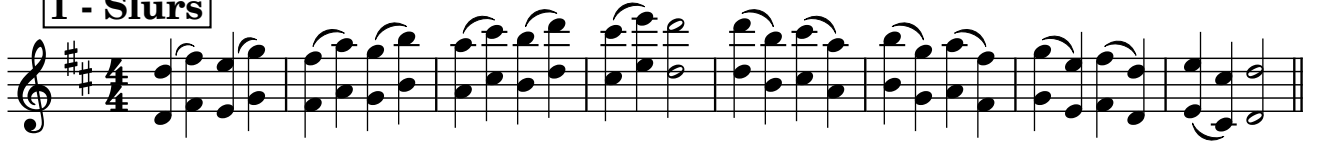
mf *mp* *f* *p*

Flute

Da Capo Warm Ups - Articulation Patterns

C Cherng

1 - Slurs



2 - Staccato



3 - Tenuto



4 - Mixed



Da Capo Warm Ups - Chorales

Bach arr. C Cherng

♩ = 80

1. Wer Hat Dich So Geschlagen

Musical notation for the first chorale, 'Wer Hat Dich So Geschlagen'. It is written in treble clef with a key signature of one sharp (F#) and a 4/4 time signature. The piece consists of three staves of music. The first staff starts at measure 1 and ends at measure 4. The second staff starts at measure 5 and ends at measure 8. The third staff starts at measure 10 and ends at measure 13. The melody features various rhythmic patterns, including eighth and sixteenth notes, and rests.

2. O Grosse Lieb

Musical notation for the second chorale, 'O Grosse Lieb'. It is written in treble clef with a key signature of two flats (Bb, Eb) and a 4/4 time signature. The piece consists of two staves of music. The first staff starts at measure 1 and ends at measure 6. The second staff starts at measure 7 and ends at measure 12. The melody is characterized by a steady eighth-note rhythm with some melodic leaps.

3. Herzliebster Jesu, was hast du verbrochen

Musical notation for the third chorale, 'Herzliebster Jesu, was hast du verbrochen'. It is written in treble clef with a key signature of one sharp (F#) and a 4/4 time signature. The piece consists of two staves of music. The first staff starts at measure 1 and ends at measure 6. The second staff starts at measure 7 and ends at measure 12. The melody is simple and features a mix of quarter and eighth notes.

4. Was Gott tut, das ist wohlgetan

Musical notation for the fourth chorale, 'Was Gott tut, das ist wohlgetan'. It is written in treble clef with a key signature of two flats (Bb, Eb) and a 4/4 time signature. The piece consists of three staves of music. The first staff starts at measure 1 and ends at measure 6. The second staff starts at measure 7 and ends at measure 10. The third staff starts at measure 11 and ends at measure 12. The melody is more complex, featuring sixteenth-note runs and various rests.

Da Capo Warm-Ups - Rounds

A. Frere Jacques

Traditional

INSTRUMENTS IN C

A grand staff musical score for instruments in C. It consists of three staves: treble, alto, and bass clefs. The key signature has one flat (Bb) and the time signature is 4/4. The music is a round, with the first staff (treble clef) playing a melody of eighth notes, the second staff (alto clef) playing a melody of quarter notes, and the third staff (bass clef) playing a melody of eighth notes. The piece concludes with a double bar line.

INSTRUMENTS IN Bb

A single staff musical score for instruments in Bb. The key signature has two flats (Bb and Eb) and the time signature is 4/4. The melody consists of eighth notes in the first two measures, followed by quarter notes in the next two measures, and eighth notes in the final two measures. The piece concludes with a double bar line.

INSTRUMENTS IN Eb

A single staff musical score for instruments in Eb. The key signature has three flats (Bb, Eb, and Ab) and the time signature is 4/4. The melody consists of eighth notes in the first two measures, followed by quarter notes in the next two measures, and eighth notes in the final two measures. The piece concludes with a double bar line.

INSTRUMENTS IN F

A single staff musical score for instruments in F. The key signature has two sharps (F# and C#) and the time signature is 4/4. The melody consists of eighth notes in the first two measures, followed by quarter notes in the next two measures, and eighth notes in the final two measures. The piece concludes with a double bar line.

B. Tod und Schlaf

Haydn

INSTRUMENTS IN C

Musical score for Instruments in C, measures 1-7. The score is in 4/4 time and C major. It features a piano accompaniment with a treble and bass clef. The melody is primarily in the treble clef, with some bass clef entries. The music consists of eighth and quarter notes, with some rests.

8

Musical score for Instruments in C, measures 8-11. The score continues from the previous system. It features a piano accompaniment with a treble and bass clef. The melody is primarily in the treble clef, with some bass clef entries. The music consists of eighth and quarter notes, with some rests.

INSTRUMENTS IN Bb

Musical score for Instruments in Bb, measures 1-7. The score is in 4/4 time and Bb major. It features a single treble clef staff. The melody consists of eighth and quarter notes, with some rests.

8

Musical score for Instruments in Bb, measures 8-11. The score continues from the previous system. It features a single treble clef staff. The melody consists of eighth and quarter notes, with some rests.

INSTRUMENTS IN Eb

Musical score for Instruments in Eb, measures 1-7. The score is in 4/4 time and Eb major. It features a single treble clef staff. The melody consists of eighth and quarter notes, with some rests.

9

Musical score for Instruments in Eb, measures 8-11. The score continues from the previous system. It features a single treble clef staff. The melody consists of eighth and quarter notes, with some rests.

INSTRUMENTS IN F

Musical score for Instruments in F, measures 1-7. The score is in 4/4 time and F major. It features a single treble clef staff. The melody consists of eighth and quarter notes, with some rests.

8

Musical score for Instruments in F, measures 8-11. The score continues from the previous system. It features a single treble clef staff. The melody consists of eighth and quarter notes, with some rests.

C. Viel Glück und Viel Segen

Werner Gneist

INSTRUMENTS IN C

A piano score for instruments in C major, 3/4 time. The score consists of three staves: Treble, Bass, and a grand staff (Treble and Bass). The melody is primarily in the Treble staff, with accompaniment in the Bass and grand staff. The piece concludes with a double bar line.

INSTRUMENTS IN Bb

A single-staff musical score for instruments in B-flat major, 3/4 time. The key signature has two flats (Bb and Eb). The melody is written in a treble clef. The piece concludes with a double bar line.

INSTRUMENTS IN Eb

A single-staff musical score for instruments in E-flat major, 3/4 time. The key signature has three flats (Bb, Eb, and Ab). The melody is written in a treble clef. The piece concludes with a double bar line.

INSTRUMENTS IN F

A single-staff musical score for instruments in F major, 3/4 time. The key signature has one flat (Bb). The melody is written in a treble clef. The piece concludes with a double bar line.

D. Row, Row, Row Your Boat

Traditional

INSTRUMENTS IN C

A piano accompaniment score for instruments in C. It consists of three staves: Treble, Bass, and a lower Bass staff. The key signature is one sharp (F#) and the time signature is 4/4. The piece is divided into four measures. The first two measures are simple accompaniment. The last two measures feature a complex triplet pattern in all three staves, with the number '3' written above and below the notes.

INSTRUMENTS IN Bb

A single-staff musical score for instruments in Bb. The key signature is two sharps (F# and C#) and the time signature is 4/4. The piece is divided into four measures. The first two measures are simple accompaniment. The last two measures feature a triplet pattern, with the number '3' written above and below the notes.

INSTRUMENTS IN Eb

A single-staff musical score for instruments in Eb. The key signature is three sharps (F#, C#, and G#) and the time signature is 4/4. The piece is divided into four measures. The first two measures are simple accompaniment. The last two measures feature a triplet pattern, with the number '3' written above and below the notes.

INSTRUMENTS IN F

A single-staff musical score for instruments in F. The key signature is two sharps (F# and C#) and the time signature is 4/4. The piece is divided into four measures. The first two measures are simple accompaniment. The last two measures feature a triplet pattern, with the number '3' written above and below the notes.