

Clarinet in B $\flat$

# Da Capo Warm-Ups - Major Scales

C Cherng

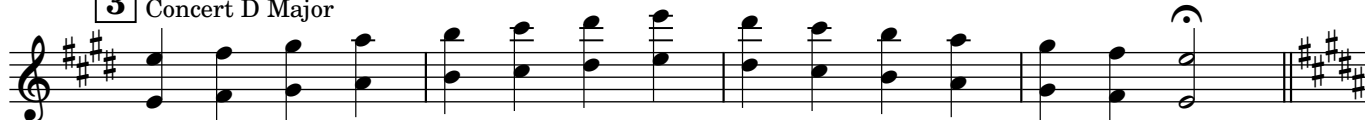
**1** Concert C Major



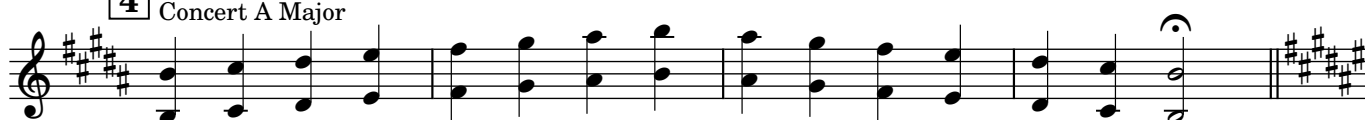
**2** Concert G Major



**3** Concert D Major



**4** Concert A Major



**5** Concert E Major



**6** Concert B Major



**7** Concert D $\flat$  Major



**8** Concert A $\flat$  Major



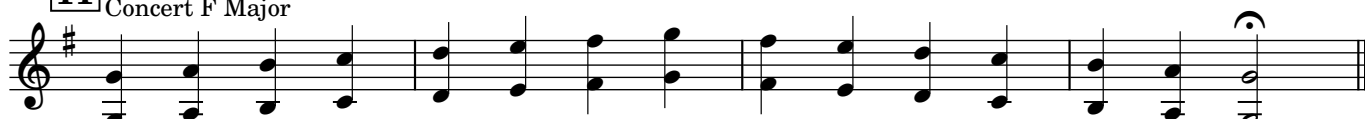
**9** Concert E $\flat$  Major



**10**  
Concert B $\flat$  Major



**11** Concert F Major



Clarinet in B $\flat$  1

# Da Capo Warm-Ups - Dynamic Control

C Cherng

## A - Long Notes

*mf* *mp* *p* *p* < *mf* *mf* *f* *ff* > *p* < *ff*

## B - Swells

*p* *f*

## C - Forte-piano

*p* *fp*

## D - Mixed Dynamics

*mf* *mp* *f* *p*

Clarinet in B $\flat$

# Da Capo Warm Ups - Articulation Patterns

C Cherng

## 1 - Slurs



## 2 - Staccato



## 3 - Tenuto



## 4 - Mixed



Clarinet in B $\flat$  1

# Da Capo Warm Ups - Chorales

Bach arr. C Cherng

$\text{♩} = 80$

## 1. Wer Hat Dich So Geschlagen

Musical notation for the first chorale, 'Wer Hat Dich So Geschlagen'. It consists of three staves of music in treble clef, 4/4 time, with a key signature of three sharps (F#, C#, G#). The first staff starts with a treble clef, a key signature of three sharps, and a 4/4 time signature. The music features a series of eighth and quarter notes with various rests and slurs. The second staff begins with a measure rest labeled '5'. The third staff begins with a measure rest labeled '10' and ends with a double bar line.

## 2. O Grosse Lieb

Musical notation for the second chorale, 'O Grosse Lieb'. It consists of two staves of music in treble clef, 4/4 time, with a key signature of three sharps (F#, C#, G#). The first staff starts with a treble clef, a key signature of three sharps, and a 4/4 time signature. The music features a series of eighth and quarter notes with various rests and slurs. The second staff begins with a measure rest labeled '8' and ends with a double bar line.

## 3. Herzliebster Jesu, was hast du verbrochen

Musical notation for the third chorale, 'Herzliebster Jesu, was hast du verbrochen'. It consists of two staves of music in treble clef, 4/4 time, with a key signature of three sharps (F#, C#, G#). The first staff starts with a treble clef, a key signature of three sharps, and a 4/4 time signature. The music features a series of eighth and quarter notes with various rests and slurs. The second staff begins with a measure rest labeled '7' and ends with a double bar line.

## 4. Was Gott tut, das ist wohlgetan

Musical notation for the fourth chorale, 'Was Gott tut, das ist wohlgetan'. It consists of two staves of music in treble clef, 4/4 time, with a key signature of three sharps (F#, C#, G#). The first staff starts with a treble clef, a key signature of three sharps, and a 4/4 time signature. The music features a series of eighth and quarter notes with various rests and slurs. The second staff begins with a measure rest labeled '7' and ends with a double bar line.

# Da Capo Warm-Ups - Rounds

A. Frere Jacques

Traditional

**INSTRUMENTS IN C**

A piano accompaniment for the first round in C major. It consists of three staves: treble, middle, and bass. The treble staff has a key signature of one flat (Bb) and a 4/4 time signature. The melody is a simple, repetitive pattern of eighth and quarter notes. The middle and bass staves provide harmonic support with chords and moving lines.

**INSTRUMENTS IN Bb**

A single treble staff for the second round in Bb major. The key signature has two flats (Bb and Eb) and the time signature is 4/4. The melody is a simple, repetitive pattern of eighth and quarter notes.

**INSTRUMENTS IN Eb**

A single treble staff for the third round in Eb major. The key signature has three flats (Bb, Eb, and Ab) and the time signature is 4/4. The melody is a simple, repetitive pattern of eighth and quarter notes.

**INSTRUMENTS IN F**

A single treble staff for the fourth round in F major. The key signature has two flats (Bb and Eb) and the time signature is 4/4. The melody is a simple, repetitive pattern of eighth and quarter notes.

# B. Tod und Schlaf

Haydn

## INSTRUMENTS IN C

Musical score for Instruments in C, measures 1-7. The score is in 4/4 time and C major. It features a piano accompaniment with a treble and bass clef. The melody is primarily in the treble clef, with some notes in the bass clef. The key signature has one sharp (F#) and the time signature is 4/4.

8

Musical score for Instruments in C, measures 8-11. The score continues from the previous system. It features a piano accompaniment with a treble and bass clef. The melody is primarily in the treble clef, with some notes in the bass clef. The key signature has one sharp (F#) and the time signature is 4/4.

## INSTRUMENTS IN Bb

Musical score for Instruments in Bb, measures 1-7. The score is in 4/4 time and Bb major. It features a single melodic line in the treble clef. The key signature has two flats (Bb, Eb) and the time signature is 4/4.

8

Musical score for Instruments in Bb, measures 8-11. The score continues from the previous system. It features a single melodic line in the treble clef. The key signature has two flats (Bb, Eb) and the time signature is 4/4.

## INSTRUMENTS IN Eb

Musical score for Instruments in Eb, measures 1-7. The score is in 4/4 time and Eb major. It features a single melodic line in the treble clef. The key signature has three flats (Bb, Eb, Ab) and the time signature is 4/4.

9

Musical score for Instruments in Eb, measures 8-11. The score continues from the previous system. It features a single melodic line in the treble clef. The key signature has three flats (Bb, Eb, Ab) and the time signature is 4/4.

## INSTRUMENTS IN F

Musical score for Instruments in F, measures 1-7. The score is in 4/4 time and F major. It features a single melodic line in the treble clef. The key signature has two flats (Bb, Eb) and the time signature is 4/4.

8

Musical score for Instruments in F, measures 8-11. The score continues from the previous system. It features a single melodic line in the treble clef. The key signature has two flats (Bb, Eb) and the time signature is 4/4.

# C. Viel Gluck und Viel Segen

Werner Gneist

## INSTRUMENTS IN C

A piano arrangement in C major, 3/4 time. The score consists of three staves: Treble, Bass, and a grand staff (Treble and Bass). The melody is primarily in the Treble staff, with accompaniment in the Bass and grand staff. The piece concludes with a double bar line.

## INSTRUMENTS IN Bb

A single-staff musical score in B-flat major, 3/4 time. The melody is written in treble clef. The piece concludes with a double bar line.

## INSTRUMENTS IN Eb

A single-staff musical score in E-flat major, 3/4 time. The melody is written in treble clef. The piece concludes with a double bar line.

## INSTRUMENTS IN F

A single-staff musical score in F major, 3/4 time. The melody is written in treble clef. The piece concludes with a double bar line.

# D. Row, Row, Row Your Boat

Traditional

## INSTRUMENTS IN C

A piano accompaniment score for instruments in C. It consists of three staves: Treble, Bass, and a lower Bass staff. The key signature has two sharps (F# and C#) and the time signature is 4/4. The melody in the Treble staff is primarily quarter and eighth notes. The Bass and lower Bass staves feature a rhythmic accompaniment of eighth notes, with several triplet markings (the number '3' above or below the notes) indicating groups of three notes.

## INSTRUMENTS IN Bb

A single-staff musical score for instruments in Bb. The key signature has three sharps (F#, C#, G#) and the time signature is 4/4. The melody consists of quarter and eighth notes, with triplet markings (the number '3' above or below the notes) indicating groups of three notes.

## INSTRUMENTS IN Eb

A single-staff musical score for instruments in Eb. The key signature has three sharps (F#, C#, G#) and the time signature is 4/4. The melody consists of quarter and eighth notes, with triplet markings (the number '3' above or below the notes) indicating groups of three notes.

## INSTRUMENTS IN F

A single-staff musical score for instruments in F. The key signature has two sharps (F# and C#) and the time signature is 4/4. The melody consists of quarter and eighth notes, with triplet markings (the number '3' above or below the notes) indicating groups of three notes.