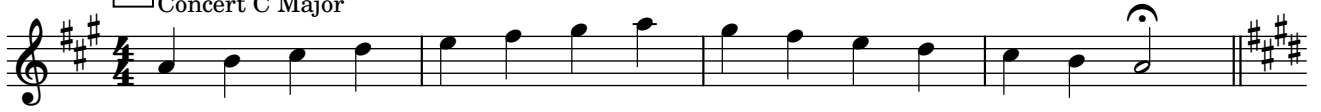


Alto Saxophone

Da Capo Warm-Ups - Major Scales

C Cherng

1 Concert C Major



2 Concert G Major



3 Concert D Major



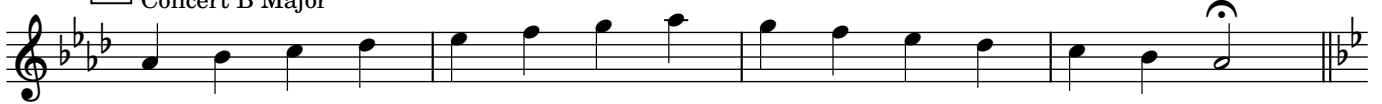
4 Concert A Major



5 Concert E Major



6 Concert B Major



7 Concert Db Major



8 Concert Ab Major



9 Concert Eb Major



10 Concert Bb Major



11 Concert F Major



Alto Saxophone

Da Capo Warm-Ups - Dynamic Control

C Cherng

A - Long Notes

musical staff with treble clef, key signature of two sharps (F# and C#), and 4/4 time signature. The staff contains ten measures of music. The first seven measures consist of single notes: a dotted quarter note, a half note, a dotted half note, a whole note, a dotted half note, a whole note, and a dotted half note. The eighth measure contains a half note and a dotted half note beamed together. The ninth measure contains a half note and a dotted half note beamed together. The tenth measure contains a whole note with a fermata. Dynamics are indicated below the notes: *mf*, *mp*, *p*, *p* < *mf*, *mf*, *f*, *ff* > *p* < *ff*.

B - Swells

musical staff with treble clef, key signature of two sharps (F# and C#), and 4/4 time signature. The staff contains five measures of music, each with a single note: a dotted quarter note, a half note, a dotted half note, a whole note, and a dotted half note with a fermata. A horizontal line with a hairpin swell symbol spans from the first note to the fourth measure. Dynamics are indicated below the notes: *p* at the beginning and *f* at the end of the swell.

C - Forte-piano

musical staff with treble clef, key signature of two sharps (F# and C#), and 4/4 time signature. The staff contains ten measures of music, each with a single note: a dotted quarter note, a half note, a dotted half note, a whole note, a dotted half note, a whole note, a dotted half note, a whole note, a dotted half note, and a whole note with a fermata. A horizontal line with a hairpin swell symbol spans from the first note to the sixth measure. Dynamics are indicated below the notes: *p* at the beginning and *fp* at the end of the swell.

D - Mixed Dynamics

musical staff with treble clef, key signature of two sharps (F# and C#), and 4/4 time signature. The staff contains ten measures of music. The first two measures are dotted quarter notes, the next two are eighth notes, the fifth is a dotted quarter note, the sixth is a half note, the seventh is a dotted half note, the eighth is a whole note, the ninth is a dotted quarter note, and the tenth is a whole note with a fermata. A horizontal line with a hairpin swell symbol spans from the first measure to the fourth measure. Dynamics are indicated below the notes: *mf* at the beginning, *mp* at the end of the first swell, *f* at the beginning of the second swell, and *p* at the end of the second swell.

Alto Saxophone

Da Capo Warm Ups - Articulation Patterns

C Cherng

1 - Slurs



2 - Staccato



3 - Tenuto



4 - Mixed



Da Capo Warm Ups - Chorales

Bach arr. C Cherng

♩ = 80

1. Wer Hat Dich So Geschlagen

Musical notation for the first chorale, 'Wer Hat Dich So Geschlagen'. It consists of three staves of music in G major (one sharp) and 4/4 time. The first staff contains measures 1-4, the second staff contains measures 5-8, and the third staff contains measures 9-12. The piece concludes with a double bar line at the end of the third staff.

2. O Grosse Lieb

Musical notation for the second chorale, 'O Grosse Lieb'. It consists of two staves of music in G major (one sharp) and 4/4 time. The first staff contains measures 1-7, and the second staff contains measures 8-11. The piece concludes with a double bar line at the end of the second staff.

3. Herzliebster Jesu, was hast du verbrochen

Musical notation for the third chorale, 'Herzliebster Jesu, was hast du verbrochen'. It consists of two staves of music in G major (one sharp) and 4/4 time. The first staff contains measures 1-6, and the second staff contains measures 7-10. The piece concludes with a double bar line at the end of the second staff.

4. Was Gott tut, das ist wohlgetan

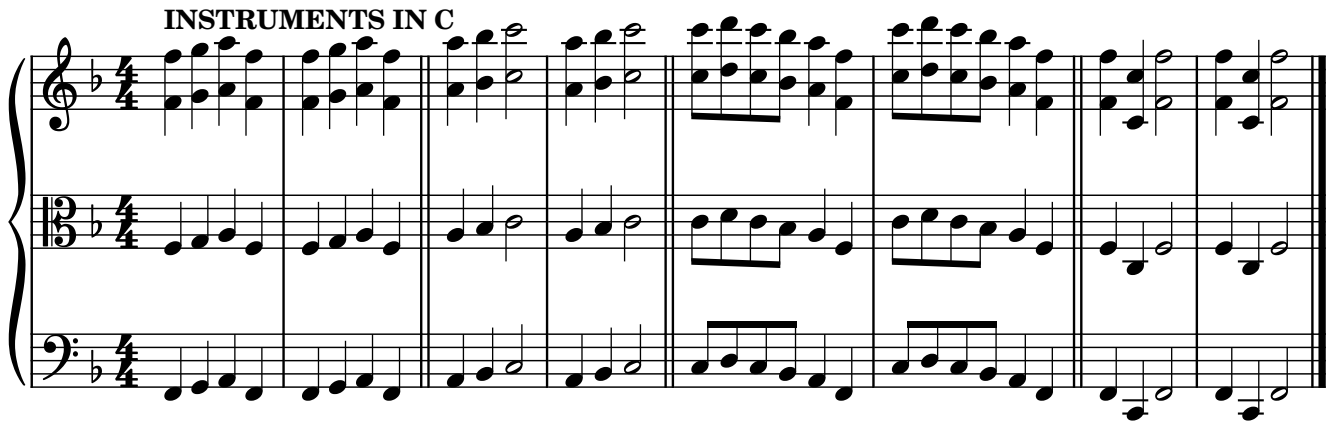
Musical notation for the fourth chorale, 'Was Gott tut, das ist wohlgetan'. It consists of two staves of music in G major (one sharp) and 4/4 time. The first staff contains measures 1-6, and the second staff contains measures 7-10. The piece concludes with a double bar line at the end of the second staff.

Da Capo Warm-Ups - Rounds

A. Frere Jacques

Traditional

INSTRUMENTS IN C




A piano accompaniment for the first round of the piece, titled 'INSTRUMENTS IN C'. The score is written in 4/4 time and consists of three staves: a grand staff (treble and bass clefs) and a separate bass staff. The key signature has one flat (Bb). The music features a steady eighth-note accompaniment in the bass and a melody in the treble with some chords and rests.

INSTRUMENTS IN Bb



A single-staff melody for the second round, titled 'INSTRUMENTS IN Bb'. The key signature has two sharps (F# and C#). The melody is written in 4/4 time and follows the same rhythmic pattern as the first round.

INSTRUMENTS IN Eb



A single-staff melody for the third round, titled 'INSTRUMENTS IN Eb'. The key signature has three flats (Bb, Eb, and Ab). The melody is written in 4/4 time and follows the same rhythmic pattern as the first round.

INSTRUMENTS IN F



A single-staff melody for the fourth round, titled 'INSTRUMENTS IN F'. The key signature has two flats (Bb and Eb). The melody is written in 4/4 time and follows the same rhythmic pattern as the first round.

B. Tod und Schlaf

Haydn

INSTRUMENTS IN C

Musical score for Instruments in C, measures 1-7. The score is in 4/4 time and C major. It features a piano accompaniment with a treble and bass clef. The melody is primarily in the treble clef, with some notes in the bass clef. The key signature has one sharp (F#) and the time signature is 4/4.

8

Musical score for Instruments in C, measures 8-11. The score continues from the previous system. It features a piano accompaniment with a treble and bass clef. The melody is primarily in the treble clef, with some notes in the bass clef. The key signature has one sharp (F#) and the time signature is 4/4.

INSTRUMENTS IN Bb

Musical score for Instruments in Bb, measures 1-7. The score is in 4/4 time and Bb major. It features a single treble clef. The key signature has two flats (Bb, Eb) and the time signature is 4/4.

8

Musical score for Instruments in Bb, measures 8-11. The score continues from the previous system. It features a single treble clef. The key signature has two flats (Bb, Eb) and the time signature is 4/4.

INSTRUMENTS IN Eb

Musical score for Instruments in Eb, measures 1-7. The score is in 4/4 time and Eb major. It features a single treble clef. The key signature has three flats (Eb, Ab, Db) and the time signature is 4/4.

9

Musical score for Instruments in Eb, measures 8-11. The score continues from the previous system. It features a single treble clef. The key signature has three flats (Eb, Ab, Db) and the time signature is 4/4.

INSTRUMENTS IN F

Musical score for Instruments in F, measures 1-7. The score is in 4/4 time and F major. It features a single treble clef. The key signature has two flats (Bb, Eb) and the time signature is 4/4.

8

Musical score for Instruments in F, measures 8-11. The score continues from the previous system. It features a single treble clef. The key signature has two flats (Bb, Eb) and the time signature is 4/4.

C. Viel Gluck und Viel Segen

Werner Gneist

INSTRUMENTS IN C

A piano score for instruments in C major, 3/4 time signature. The score consists of three staves: Treble, Bass, and a grand staff (Treble and Bass). The melody is primarily in the Treble staff, with accompaniment in the Bass and grand staff. The piece concludes with a double bar line.

INSTRUMENTS IN Bb

A single-staff musical score for instruments in B-flat major, 3/4 time signature. The melody is written in treble clef with a key signature of one flat. The piece concludes with a double bar line.

INSTRUMENTS IN Eb

A single-staff musical score for instruments in E-flat major, 3/4 time signature. The melody is written in treble clef with a key signature of three flats. The piece concludes with a double bar line.

INSTRUMENTS IN F

A single-staff musical score for instruments in F major, 3/4 time signature. The melody is written in treble clef with a key signature of one flat. The piece concludes with a double bar line.

D. Row, Row, Row Your Boat

Traditional

INSTRUMENTS IN C

A musical score for instruments in C, presented in a grand staff with three staves. The top staff uses a treble clef, the middle a bass clef, and the bottom a bass clef. The key signature has two sharps (F# and C#), and the time signature is 4/4. The piece consists of four measures. The first two measures show a simple melody in the treble clef and a bass line in the bass clefs. The last two measures feature a complex texture with triplets (marked with a '3') in all three staves, creating a rhythmic pattern of eighth notes.

INSTRUMENTS IN Bb

A musical score for instruments in Bb, shown on a single staff with a treble clef. The key signature has three sharps (F#, C#, G#), and the time signature is 4/4. The piece consists of four measures. The first two measures show a simple melody. The last two measures feature a complex texture with triplets (marked with a '3') in the melody.

INSTRUMENTS IN Eb

A musical score for instruments in Eb, shown on a single staff with a treble clef. The key signature has four sharps (F#, C#, G#, D#), and the time signature is 4/4. The piece consists of four measures. The first two measures show a simple melody. The last two measures feature a complex texture with triplets (marked with a '3') in the melody.

INSTRUMENTS IN F

A musical score for instruments in F, shown on a single staff with a treble clef. The key signature has two sharps (F# and C#), and the time signature is 4/4. The piece consists of four measures. The first two measures show a simple melody. The last two measures feature a complex texture with triplets (marked with a '3') in the melody.