

Violins

# Da Capo Warm-Ups - Major Scales

C Cherng

1 Concert C Major



2 Concert G Major



3 Concert D Major



4 Concert A Major



5 Concert E Major



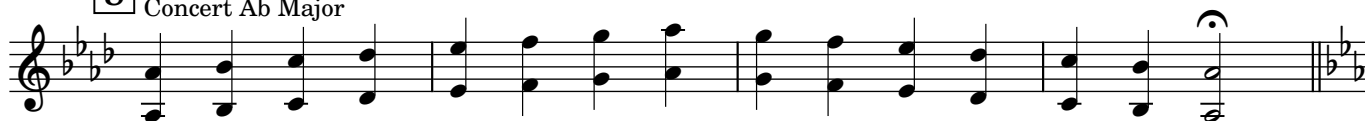
6 Concert B Major



7 Concert Db Major



8 Concert Ab Major



9 Concert Eb Major



10 Concert Bb Major



11 Concert F Major



Violins 2

# Da Capo Warm-Ups - Dynamic Control

C Cherng

## A - Long Notes

*mf*   *mp*   *p*   *p* < *mf*   *mf*   *f*   *ff* > *p* < *ff*

## B - Swells

*p*   *f*

## C - Forte-piano

*p*   *fp*

## D - Mixed Dynamics

*mf*   *mp*   *f*   *p*

Violins

# Da Capo Warm Ups - Articulation Patterns

C Cherng

## 1 - Slurs



## 2 - Staccato



## 3 - Tenuto



## 4 - Mixed



# Da Capo Warm Ups - Chorales

Bach arr. C Cherng

$\text{♩} = 80$

## 1. Wer Hat Dich So Geschlagen

Musical notation for the first chorale, 'Wer Hat Dich So Geschlagen'. It consists of three staves of music in treble clef, 4/4 time, with a key signature of one sharp (F#). The first staff begins with a 'v' marking above the first measure. The piece concludes with a double bar line at the end of the third staff.

## 2. O Grosse Lieb

Musical notation for the second chorale, 'O Grosse Lieb'. It consists of three staves of music in treble clef, 4/4 time, with a key signature of two flats (Bb, Eb). The piece concludes with a double bar line at the end of the third staff.

## 3. Herzliebster Jesu, was hast du verbrochen

Musical notation for the third chorale, 'Herzliebster Jesu, was hast du verbrochen'. It consists of two staves of music in treble clef, 4/4 time, with a key signature of two sharps (F#, C#). The piece concludes with a double bar line at the end of the second staff.

## 4. Was Gott tut, das ist wohlgetan

Musical notation for the fourth chorale, 'Was Gott tut, das ist wohlgetan'. It consists of two staves of music in treble clef, 4/4 time, with a key signature of two flats (Bb, Eb). The piece concludes with a double bar line at the end of the second staff.

# Da Capo Warm-Ups - Rounds

A. Frere Jacques

Traditional

**INSTRUMENTS IN C**

A grand staff musical score for instruments in C. It consists of three staves: treble, alto, and bass clefs. The key signature has one flat (Bb) and the time signature is 4/4. The music is a round, starting with a treble clef staff playing a melody of eighth notes, followed by an alto clef staff playing a similar melody, and a bass clef staff playing a rhythmic accompaniment of eighth notes. The piece concludes with a double bar line.

**INSTRUMENTS IN Bb**

A single staff musical score for instruments in Bb. The key signature has two flats (Bb and Eb) and the time signature is 4/4. The melody is written in a treble clef and follows the same round structure as the C version, with a melodic line and a rhythmic accompaniment. The piece concludes with a double bar line.

**INSTRUMENTS IN Eb**

A single staff musical score for instruments in Eb. The key signature has three flats (Bb, Eb, and Ab) and the time signature is 4/4. The melody is written in a treble clef and follows the same round structure as the C version, with a melodic line and a rhythmic accompaniment. The piece concludes with a double bar line.

**INSTRUMENTS IN F**

A single staff musical score for instruments in F. The key signature has two sharps (F# and C#) and the time signature is 4/4. The melody is written in a treble clef and follows the same round structure as the C version, with a melodic line and a rhythmic accompaniment. The piece concludes with a double bar line.

# B. Tod und Schlaf

Haydn

## INSTRUMENTS IN C

Musical score for Instruments in C, measures 1-7. The score is in 4/4 time and C major. It features a piano accompaniment with a treble and bass clef. The melody is primarily in the treble clef, with some notes in the bass clef. The key signature has one sharp (F#) and the time signature is 4/4.

8

Musical score for Instruments in C, measures 8-11. The score continues from the previous system. It features a piano accompaniment with a treble and bass clef. The melody is primarily in the treble clef, with some notes in the bass clef. The key signature has one sharp (F#) and the time signature is 4/4.

## INSTRUMENTS IN Bb

Musical score for Instruments in Bb, measures 1-7. The score is in 4/4 time and Bb major. It features a single melodic line in the treble clef. The key signature has two flats (Bb, Eb) and the time signature is 4/4.

8

Musical score for Instruments in Bb, measures 8-11. The score continues from the previous system. It features a single melodic line in the treble clef. The key signature has two flats (Bb, Eb) and the time signature is 4/4.

## INSTRUMENTS IN Eb

Musical score for Instruments in Eb, measures 1-7. The score is in 4/4 time and Eb major. It features a single melodic line in the treble clef. The key signature has three flats (Bb, Eb, Ab) and the time signature is 4/4.

9

Musical score for Instruments in Eb, measures 8-11. The score continues from the previous system. It features a single melodic line in the treble clef. The key signature has three flats (Bb, Eb, Ab) and the time signature is 4/4.

## INSTRUMENTS IN F

Musical score for Instruments in F, measures 1-7. The score is in 4/4 time and F major. It features a single melodic line in the treble clef. The key signature has two flats (Bb, Eb) and the time signature is 4/4.

8

Musical score for Instruments in F, measures 8-11. The score continues from the previous system. It features a single melodic line in the treble clef. The key signature has two flats (Bb, Eb) and the time signature is 4/4.

# C. Viel Gluck und Viel Segen

Werner Gneist

## INSTRUMENTS IN C

A piano score for instruments in C major, 3/4 time. The score consists of three staves: Treble, Bass, and a grand staff (Treble and Bass). The melody is primarily in the Treble staff, with accompaniment in the Bass and grand staff. The piece concludes with a double bar line.

## INSTRUMENTS IN Bb

A single-staff musical score for instruments in B-flat major, 3/4 time. The key signature has two flats (Bb and Eb). The melody is written in a treble clef and concludes with a double bar line.

## INSTRUMENTS IN Eb

A single-staff musical score for instruments in E-flat major, 3/4 time. The key signature has three flats (Bb, Eb, and Ab). The melody is written in a treble clef and concludes with a double bar line.

## INSTRUMENTS IN F

A single-staff musical score for instruments in F major, 3/4 time. The key signature has one flat (Bb). The melody is written in a treble clef and concludes with a double bar line.

# D. Row, Row, Row Your Boat

Traditional

## INSTRUMENTS IN C

A piano accompaniment score for instruments in C. It consists of three staves: Treble, Bass, and Tenor. The key signature is one sharp (F#) and the time signature is 4/4. The piece is divided into four measures. The first two measures show a simple accompaniment pattern. The last two measures feature a more complex texture with triplets in the Treble and Bass staves, and a steady eighth-note accompaniment in the Tenor staff.

## INSTRUMENTS IN Bb

A single-staff musical score for instruments in Bb. The key signature is two sharps (F# and C#) and the time signature is 4/4. The piece is divided into four measures. The first two measures show a simple accompaniment pattern. The last two measures feature a more complex texture with triplets in the Treble staff.

## INSTRUMENTS IN Eb

A single-staff musical score for instruments in Eb. The key signature is three sharps (F#, C#, and G#) and the time signature is 4/4. The piece is divided into four measures. The first two measures show a simple accompaniment pattern. The last two measures feature a more complex texture with triplets in the Treble staff.

## INSTRUMENTS IN F

A single-staff musical score for instruments in F. The key signature is two sharps (F# and C#) and the time signature is 4/4. The piece is divided into four measures. The first two measures show a simple accompaniment pattern. The last two measures feature a more complex texture with triplets in the Treble staff.